

NEWSLETTER

TERM 2 - MAY 2026



We warmly wish all mothers, grandmothers, and carers a very happy Mother's Day. Thank you for the love, care, and support you give each day – it makes a lasting difference in the lives of our students.

IMPORTANT TERM DATES

Friday 15 May

B4 ASSEMBLY

Friday 29 May

A3 ASSEMBLY

WA SYMPHONY ORCHESTRA INCURSION

Monday 1 June

Western Australia Day (public holiday)

Friday 12 June

PRE PRIMARY ASSEMBLY

P&C Disco

Wednesday 1 July

School Closure

Friday 3 July

Last Day of Term 2

You can find all of your child's upcoming important dates on their Compass portal profile.



Mother's Day Facts

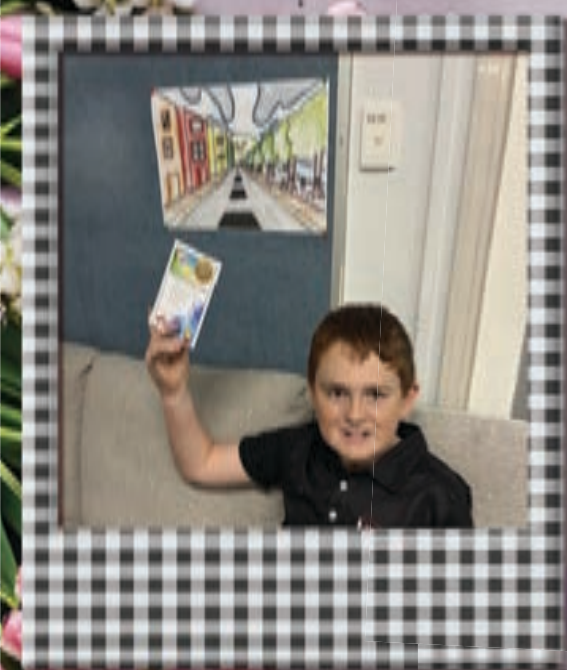
Watch out for fun Mother's Day facts throughout this edition

INSIDE THIS EDITION

- Office Superstars
- Letter from the Principal
- Harmony Day
- Maths Incursions
- Rabbitohs Incursion
- Yale P&C News
- Community News

**Dates and events are subject to change at any time. Please refer to the Compass calendar for updates.*

Office Superstars



Thank you



THANK YOU

to the Clarke family for the staging risers they have donated to the school. These will be so useful for future Yale events!

Mother's Day Fact
no. 1



Did you know that Mother's Day isn't always celebrated on the same day each year? The holiday is celebrated every year on the second Sunday of the month of May. This year it will be on May 12th.

Hello Yale families,

Welcome back to Yale for Term 2. My thanks to Leading Aircraftsman Phi Huynh from the Royal Australian Air Force for delivering a moving address at our ANZAC Service recently. His reflections helped our students understand the importance of service, sacrifice and remembrance and we appreciate him taking the time to support our school community. Thanks to our Student Leaders for running the service and Mr Riley for the music.



Thank you also to Ms Raven and the students of B5 for their wonderful assembly in week 2. This was particularly special as it was the first-class assembly held in our undercover area following the completion of the renovations. The students did a fantastic job especially using sign language as part of the item.

I am pleased to share that our \$1 million building project is now complete. This has included the undercover area renovations, covered playgrounds, new basketball surface and new fencing around the courts. My thanks to Ms Thoseby and Mr Melling for their oversight and work throughout the project to help ensure everything was completed smoothly for our students and community.

Looking ahead, we thank our Yale P&C for once again organising the upcoming Mother's Day stall and other events this term. We also look forward to our winter interschool events later in the term.

Thank you to our staff who are already preparing students for these opportunities and helping them represent Yale with pride.

Kind regards,
Jason Shapcott
Principal



At Yale Primary School, Harmony Day was a vibrant celebration of diversity, inclusion, and belonging, bringing students, staff, families, and the wider community together to recognise the many cultures that make our school so special. Students enjoyed a range of engaging activities that promoted kindness, respect and unity, proudly wearing their cultural outfits and orange to show that “everyone belongs.”

This year’s celebration was made even more special with the official opening of our newly renovated undercover space. The upgraded area provides a welcoming and versatile environment for assemblies, performances, learning activities, and community events throughout the year. The opening marked an exciting milestone for the school, reflecting our commitment to creating safe, inclusive and engaging spaces where every student can connect, learn and thrive.



Mother's Day Fact no. 2

Mother's Day is the third highest selling holiday for flowers and plants. After Valentine's Day and Christmas Day one quarter of all the flowers purchased throughout the year are bought for Mother's Day.



Maths Week at Yale Primary was a fantastic celebration of curiosity, problem-solving, and creativity. Students were immersed in a range of exciting activities, including a special incursion with Professor Maths, who brought numbers to life through engaging and interactive sessions. Another highlight of the week was the maths-themed escape room, where students worked collaboratively to crack codes, solve puzzles, and think critically under pressure. We also extend our congratulations to the talented winners of the Maths Art Competition. Their work showcased not only strong mathematical understanding but also impressive creativity and originality. Well done to all students who participated and helped make Maths Week such a memorable and inspiring experience!



Mother's Day Fact no. 3

Polls suggest very few mothers actually want breakfast in bed. Most prefer a meal out.



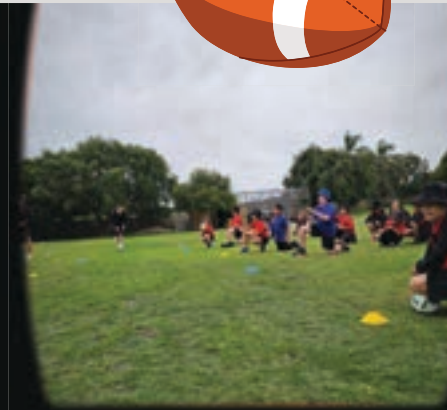
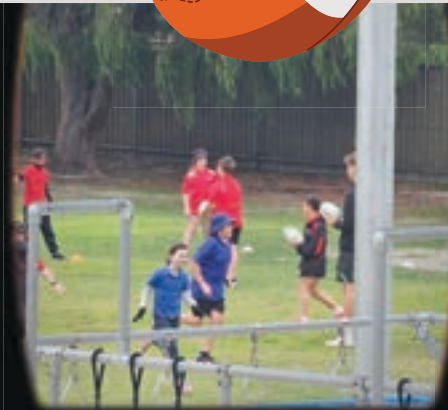
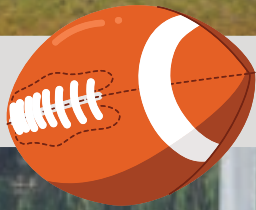
Maths Art Competition winners



Escape Room



Rabbitohs Incursion



YALE P&C UPDATE



FOLLOW US ON
FACEBOOK



THIS WEEKEND 9TH MAY - COME SAY HI!!

Come join us at Bunnings Maddington this Saturday as we host a Bunnings Sausage Sizzle as a fundraiser for Yale Primary!!! 9am to 4pm Come Say Hi!!

TERM 1 - EASTER RAFFLE & FREE DRESS

First fundraiser of the year, we were overwhelmed with everyone support from donations and buying tickets. We managed to raise \$575!! Thankyou.

UPCOMING EVENTS - DISCO !!!

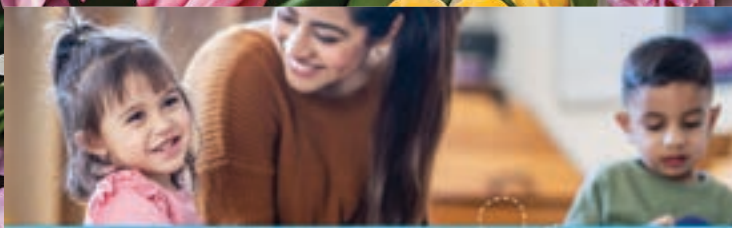
Its Official the Disco is going to be Friday the 12th June!! More information to follow please watch out for updates, posters and the best way to do this is join our P&C facebook page QR code is above. We will be needing as many volunteers for this!!

Mother's Day Fact

no. 4

Mums all over the world receive millions of pieces of homemade art annually. It is a staple gift for younger children.





My Play School

For Parents and Carers of children 3-5 years

My Play School is a free 7-week education program that supports parents from diverse cultural backgrounds, with children 3 to 5 years of age, where there may be some challenges identified.

The program gives children (with support from their caregiver) flexible, yet structured play experiences that nurture a sense of safety, whilst building self-confidence and a curiosity for learning and engaging with others. The facilitators gently build connections with the children, supporting each child to engage in activities and interactions at their own pace. The program creates opportunities for children to build and develop their social and emotional skills.

Interacting and communicating with others, and feeling safe and confident enough to do so, is fundamental to children's successful transition to primary school

Wednesday 18 February - Friday 3 April 2026

Wednesdays & Fridays 9.30am - 11.30am **Parent and Child attend both sessions together.**

Communicare 28 Cecil Avenue Carrington **FREE**

For further information:

☎ 08 9251 5777
✉ mpls@communicare.org.au
🌐 www.communicare.org.au

COMMUNICARE
CREATING FUTURES

telathon 7



This program will prioritise the following:

- Families with children who are developing differently or experiencing social or emotional challenges.
- Parents on student visas or other visas which limit their child's access to subsidised Kindergarten.
- Families with children who are unable to access the NDIS or are waiting to access the NDIS.

Expectations from participating families:

- Priority will be given to families who are able to attend both days for the 7 weeks (to maximise the benefits of the program)
- Parents are required to be with their child throughout the sessions
- 1 parent and 1 child per family

Other important information:

- A maximum of 10 families can participate in this program per term.
- Suitable families will be offered a place on the waitlist for following terms if there are no places available.

COMMUNICARE
CREATING FUTURES

telathon 7

Child and Parent Centre
Brockman



Term 2 Planner 2026

	Program	Program Type	Time	Descriptions	Booking Required
Monday	MyTime Parent Group (Autism WA)	Parents of children with disabilities aged below 18 years are welcome. Play leaders will be available to supervise children aged 8 years and under	12.30pm - 2.30pm	MyTime groups provide support for mothers, fathers, grandparents, and anyone caring for a child with a disability or chronic medical condition, or other additional needs, including developmental delay.	Once joined group
Tuesday	Hand-in-Hand	Playgroup for parents and carers of toddlers 18 months to 3 years	9.00am - 11.00am	A playgroup for children and parents incorporating play, craft, music, and fundamental movement skill activities that provide the opportunity for parent-child connection and skill building.	Yes
Wednesday	Ready, Set, Go! Pre-Kindy	Transition to Kindy Playgroup	9.00am - 11.00am	A play-based Pre-Kindy playgroup which builds skills in both parents and children for preparing to start school the following year. The program is for families living in Langford, Lynwood, Parkwood, Ferndale and Thornlie with children starting Kindy at one of our local schools in 2026. (4-term commitment)	Yes
Thursday	Pure Joy	For parents and carers of babies aged 0 to 12 months	9.30am - 10.30am	A baby nurture group for parents/carers and their babies to explore, play, and learn about attaching and interacting with each other.	Yes
Friday	Connecting Curiosity	Playgroup for parents and carers of toddlers 18 months to 3 years	9.30am - 11.00am	A repeat program of Tuesday's Hand-in-Hand playgroup. (Families are kindly asked to choose to attend one group)	Yes
	Active8	Parents and carers of children 2 to 5 years	12.30 - 2.00pm	A program for parents/carers and their children, providing guidance around physical activity, healthy eating and nutrition to help build confidence during mealtimes and form healthy family habits.	Register online using QR code

To register your interest for our programs or workshops

Child Health Nurse
Days: Mondays & Tuesdays
Time: 8.30am to 4.00pm
Phone: 1300 749 869
Appointments required.

Speech Pathologist
Days: Wednesdays and Thursdays
Time: 8.30am to 4.00pm
Phone: 0428 325 806 or 6391 0200
Appointments required.

Culturally Diverse Psychological Service (Life Without Barriers)
CaLD Adult Counselling
Days: Mondays
Time: 8.30am to 4.00pm
Phone: 9236 7032 for enquiries



School Hours

Start: 8.40am (classrooms open)

8.50am roll is called
(students must not arrive to school before 8.30am. Any arrivals after 8.50am must get a late note from front office)

Recess: 10.30am - 10.55am

Lunch: 12.35pm - 1.10pm

Finish: 3.00pm

Students must be collected at 3pm when the bell has rung for the end of the day. Any student still at school after this time will remain in the front office until collected. Parents/Carers must sign their child out after 3.15pm.

Canteen

Open Wednesday - Friday in the undercover assembly area. Orders can be placed at the canteen with cash or online using the **QKR app** before 9am. Please note opening days and menu is subject to change.

Uniform Shop

Our uniforms are supplied and sold by **Lowes in Maddington**.

Maddington Shopping Center
Crn Attfield St/ Burslem Drv
Maddington, 6109
Phone: 9452 0380

Compass Communication

Wouldn't it be great if all of your child's information was available in one place? If communication was as simple as the click of a few buttons? If payment and consent for events could be made from your phone? We thought so, too. Download the free **Compass app** now! If you have any issues, please contact the front office.

Helping Hands

Before and after school care located at Yale Primary

Phone: 0452 275 110

Breakfast Club

Breakfast will be served every Monday, Tuesday, Wednesday & Friday from **8:15am to 8:45am** at the Chaplain's office located in the new building.

Western Australian law requires all school-aged children go to and attend school every day. If your child is absent, please notify the school via: telephone, the website absence button, email, in person or via the Compass app. If your child is late to school for any reason, please bring them to the office to collect an arrival note before they go to class.

CONTACT US

Yale Primary School
Sage Road
Thornlie WA 6108

Office hours
8.00am - 4.00pm

Phone
(08) 9232 3500

Website
www.yale.wa.edu.au

Email
yale.ps.reception@education.wa.edu.au

