

IMPORTANT TERM DATES

Monday 11th - Friday 15th August

SCIENCE WEEK

Tuesday 12th August

YEAR 6 CAKE STALL

Friday 15th August

A1 ASSEMBLY

Monday 18th - Friday 22nd August

BOOK WEEK

Monday 18th August

BOOK WEEK PARADE

Tuesday 19th August

RTS EXCURSION

Thursday 21st August

AUTHOR VISIT

Friday 22nd August

SPELLING BEE

Monday 25th - Wednesday 27th August

FIRST AID INCURSION

Friday 29th August

A4 EXCURSION

C5 ASSEMBLY

Wednesday 3rd - Thursday 4th September

P&C FATHERS DAY STALL

Monday 8th September

B BLOCK EXCURSION

Friday 12th September

PP ASSEMBLY

Friday 19th September

FACTION CARNIVAL

Friday 26th September

C6 ASSEMBLY

*Dates and events are subject to change at any time.
Please refer to the Compass calendar for updates.



INSIDE THIS EDITION

- Office Superstars
- Letter from the Principal
- Important- Dogs on school grounds
- SEEK Network Awards
- Attendance Challenge
- Kindy Attendance Win
- When your child is sick
- Book Week Parade
- Yale P&C News
- Community News



Hide & Seek



8 playful pigs
have hidden
themselves in
the newsletter!
Can you find all
10?

The 'Did you know?' fact photos do not
count in the hide and seek total.

Office Superstars

We're thrilled to celebrate the incredible achievements and the positive impact our Office Superstars bring to our school every day. Keep shining bright and thank you for all the hard work and dedication!



Did you know?

Important Information

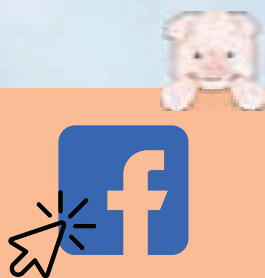
For the safety and well-being of all students, dogs of any size are not permitted on school grounds, whether on a lead, carried, or otherwise restrained. While many dogs are well-behaved, their presence can cause distress or pose risks to children who have severe allergies or a fear of dogs. Even calm animals can behave unpredictably in noisy or crowded environments, and not all children are comfortable around them. We appreciate your cooperation in helping us maintain a safe and inclusive environment for every student.



School Hours

8.40am: Classroom opens
8.50am: Morning roll is called (students **must not** arrive to school **before** 8.30am. Any arrivals **after** 8.50am must get a late note from front office)
3.00pm: School finishes

Students must be collected at 3pm when the bell has rung for the end of the day. Any student still at school after this time will remain in the front office until collected. Parents/Carers must sign their child out after 3.15pm.



P&C Facebook

Click the logo and head on over to our P&C Facebook page for updates, events and more.

Digital Newsletters

We're Going Digital!

To make communication more efficient, environmentally friendly, and accessible, we are now sending our newsletters digitally via Compass and our [school website](#).

This change helps us reduce paper use and ensures you get updates in real time.

If you would still prefer a printed copy, we're happy to provide one. Just email us or stop by the front office, and we'll make sure you're taken care of. Thank you for supporting our move toward more sustainable communication!

Letter from the Principal

Hello everyone

As we approach the midpoint of Term 3, there's a real sense of excitement in the air with a number of special events on the horizon for our students and families.

First up, our School Spelling Bee will take place on Friday 22 August. This is always a wonderful opportunity for students to challenge themselves and showcase their word wizardry in front of their peers.

In Week 7, our P&C will host the Father's Day Stall on Wednesday 3 and Thursday 4 September, giving students the chance to choose a small gift for the special father-figures in their lives. Keep an eye out for more information from the P&C for this event.

The Faction Athletics Carnival will be held on Friday 19 September, a day filled with friendly competition and cheering from the sidelines. We look forward to seeing our families join us for what is always a highlight of the year.

To round out the term, our P&C will host a Free Dress Day on the final day of school, Friday 26 September. The theme will be revealed closer to the date, so stay tune.

Attendance Matters – Every Day Counts

We are now entering our third attendance challenge period for the year, and I'm pleased to report that our attendance rate has been steadily improving. A big thank you to Ms Wood for leading this work and to all families who are making the voluntary effort to ensure their child is at school every day possible – your commitment makes a real difference to learning and your children are participating in some great rewards.

Our school motto is Be the Best You Can Be and for attendance it is simple: Be Here!! Every day a child is in class is another step forward in their education, and those small steps add up to big gains over time.

As we move into the next phase of our attendance strategy, families of students who are still not attending regularly will receive letters and, where needed, home visits from the relevant Departmental agencies. Our aim is always to work with families to overcome barriers and ensure every child has the best possible chance to succeed.

Thank you for your continued support in making school attendance a top priority – together, we can make a real difference.

Jason Shapcott
Principal

Did you know?

If trained, piglets can learn their names by two to three weeks of age and respond when called and can learn tricks faster than dogs.



ATTENDANCE CHALLENGE!

WEEK 4
-
WEEK 8

This term we're
celebrating great attendance
with sweet treats and awesome beats!

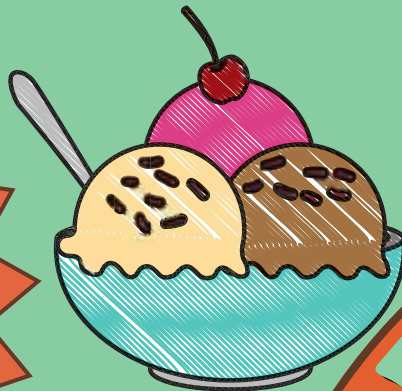
BEATS & TREATS!

WINNING CLASSES

Students will
create their own delicious ice
cream sundae with all the toppings,
then hit the dance floor for a
fun-filled disco in the shed!

LOWER PRIMARY
(K-2)
UPPER PRIMARY
(3-6)

One per group



BONUS REWARD

All classes that
improve attendance
by 1% or more get a

BE HERE!

- BE RESPONSIBLE
- BE RESPECTFUL
- BE YOUR BEST
- BE CARING

*Golden
Time*
TICKET

SEEC Network Awards

Yale Primary School is a proud member of the South East Education Community (SEEC) Network, a group of 11 local public schools who work together in partnership to deliver great opportunities for our students, staff and schools.

The vision of the SEEC Network is to provide quality education for all by: Supporting, Every child, Every day, Collaboratively.

In short, its schools working together to maximise impact for students in every classroom in the Network.

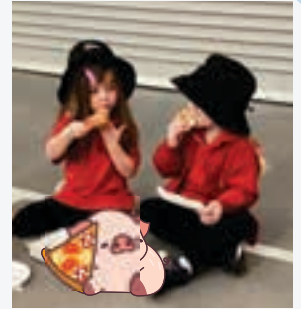
Congratulations to our wonderful staff members who have been nominated and awarded for all their great work, in the SEEC Network Awards this year.



Attendance success!

Kindy Red & B4 Celebrate Attendance Success!

Congratulations to Kindy Red and B4 students for winning the Term 2 Attendance Challenge! Their fantastic effort and commitment to coming to school each day paid off with a fun-filled celebration. The students enjoyed a delicious pizza lunch followed by exciting games with their classmates. Well done to everyone for showing up, showing spirit, and making every day count! 🎉🍕



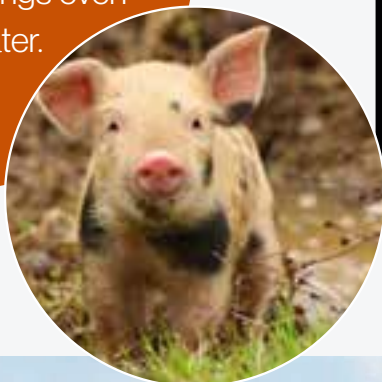
When your child is sick?

Why It's Important to Keep Sick Children Home

Help keep our school community healthy! If your child is sick, especially with symptoms like fever, vomiting, or a persistent cough, please keep them home. Sending a sick child to school not only delays their recovery but also increases the risk of spreading illness to classmates and staff. Rest at home supports faster healing and reduces disruptions to learning for everyone. Together, we can promote a healthier environment for all students!

Did you know?

Pigs have very long memories and can remember things even years later.



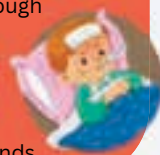
Health Reminder

WHEN YOUR CHILD IS SICK



STAY HOME & TRY AGAIN IN 24HRS

- Fever above 37.5C
- Hard, wet or consistent cough
- Constant runny nose
- Diarrhoea or vomiting
- Red, sticky or runny eyes.
- Contagious conditions
- Sore throat or swollen glands



CALL US FIRST TO CHECK

- Fever free for 24hrs without the use of paracetamol/ibuprofen
- Sporadic dry cough
- Coloured runny nose
- Change in routines (eg. not eating, very disturbed sleep)
- Unable to participate in normal daily activities (eg. lethargic)



OK TO COME & PLAY

- Mild, infrequent cough
- Clear runny nose
- Active, playful and rested



Thank you for helping us to all stay healthy

A4 Assembly

Today, Class A4 led a wonderful assembly showcasing Yale Primary's Bee Values – Respect, Caring, Our Best, and Responsible – along with a special extra value, Bee Kind. Through songs, skits, and stories, the students showed how these values help our school be a safe, happy, and supportive place for everyone. Their message was clear: when we live by our Bee Values, we all thrive together!



Come dressed as your favourite book character

book and an adventure...



BOOK WEEK PARADE

MONDAY 18TH AUGUST
9-9.35AM

UNDERCOVER ASSEMBLY AREA



We're already halfway through the school year and wow that went fast. We have lots of exciting upcoming events this term, the first being our Annual Book Sale which falls the same day as the school's Book Week Parade. Parents and students are welcome to come see us in the shed to check out the large variety of brand-new Scholastic books available for \$5 each (cash only). Stall is open on Monday 18th August before school 8.30 – 9.00am and at school pick up 2.45 – 3.15pm.

We will be holding our annual Father's Day Stall on Wednesday 3rd September for the whole school, and for Kindy Red and for those who missed out we will be open on Thursday 31st August. Prices will range from \$2 to \$12 (cash only) and we will have Grandfather options available as well. We will be looking for volunteers to help students choose their gifts at the stall, so please jump on our Facebook page and comment on the pinned post if you have some time to help out. Due to a higher number of fundraisers this term the P&C have decided to open up the orders for Crazy Camel art fundraiser at the beginning of next term – this will allow plenty of time for orders to arrive before the end of the year and you can have some easy Xmas gifts ready to go. We will send out information on this later this term.

The School Disco was a big event last term and we were so grateful to all those who made the night so much fun for the kids. Due to the date being moved to a school night in the last week of term we ended up with less people attending and therefore more stock leftover. We still ended up with a profit of just over \$2,400!

If you haven't already tried our new Canteen Specials on Fridays, make sure you do – they are delicious! We have Chicken Bao Buns and Chilli Con Carne Nachos. Online orders are available through Qkr or you can order over the counter with Jenall.

Our next meeting will be held on Thursday 18th September in the Library at 3.15pm to discuss the Term 4 fundraisers including the Colour Run. Everyone is welcome to attend.

As always, the P&C thanks you for your support!

Community News

🏆 Tee-ball is back! ●

Registrations are now OPEN for the 2025/26 season!

🏆 Join the Yale Tigers for a fun-filled season of teamwork, energy, and excitement—open to all primary school-aged kids!

📄 New online form makes signing up easy!

👉 Yale Tigers 2025/26 Registration

Let's play, learn, and make memories together.

Many thanks
Catherine York
Yale Tigers Registrar





FREE BOXING PROGRAM

PCYC Boxing

REGISTER YOUR INTEREST TODAY

WHO
Girls aged 10 – 16

WHERE
Gosnells PCYC
17 Royal St, Kenwick 6107

WHEN
Weekly, commencing
Wednesday 23rd of July
• Wednesdays 4.00 – 5.00pm
• Fridays 4.00 – 5.00pm

CONTACT
9459 1168
gosnellspcyc@wpcyc.com.au

INFO
• Free uniforms provided!
• Brand new equipment.
• Transport available, limited spots.

CLICK HERE

AN Australian Government Initiative | play our way



COMMUNICARE COMMUNITIES FOR CHILDREN CARNIVAL

Enjoy a fun day with your children, there's free fairy floss, popcorn, face painting, a sausage sizzle, and drinks!

Food
Fun
Giveaways
Kids activities
Music

Helping Families Thrive for 20 Years!

Quantity Great - 1 Quantity Bit
Located in: Muller Park
Dorelle WA 6005

11AM 2PM | 9TH OCTOBER 2023 | FREE ENTRY

CFC Drawing Competition

This year marks 20 years of supporting families across the Cities of Armadale, Gosnells, and the Shire of Serpentine Jarrahdale, and we would love for your students to be part of this special celebration.

As part of the carnival we would love to include the voice of young people and showcase the talent of local schools in our community.

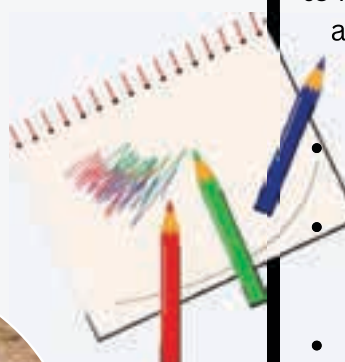
As a reminder:

- Postcard theme: "What do you like about where you live?"
- Open to: All primary school students in Armadale, Gosnells, and Serpentine Jarrahdale
- Deadline for entries: Friday, 22 August 2025
- Prizes: \$20 gift card for each school winner + selected designs printed on carnival backpacks

Drawing templates and permission forms are available at the office.

Did you know?

Pigs are very social animals. They form close bonds with each other and other species and some like to cuddle up close, especially at low temperatures.



School Hours

Start: 8.40am (classrooms open)

8.50am roll is called
(students must not arrive to school before 8.30am. Any arrivals after 8.50am must get a late note from front office)

Recess: 10.30am - 10.55am

Lunch: 12.35pm - 1.10pm

Finish: 3.00pm

Students must be collected at 3pm when the bell has rung for the end of the day. Any student still at school after this time will remain in the front office until collected. Parents/Carers must sign their child out after 3.15pm.

Canteen

Open Wednesday - Friday in the undercover assembly area. Orders can be placed at the canteen with cash or online using the **QKR app** before 9am. Please note opening days and menu is subject to change.

Compass Communication

Wouldn't it be great if all of your child's information was available in one place? If communication was as simple as the click of a few buttons? If payment and consent for events could be made from your phone? We thought so, too. Download the free **Compass app** now! If you have any issues, please contact the front office.

Helping Hands

Before and after school care located at Yale Primary

Phone: 0452 275 110

Breakfast Club

Breakfast will be served on **Mondays** and **Tuesdays** from **8:00am to 8:30am** at the Chaplains new office located in the new building.

Uniform Shop

Our uniforms are supplied and sold by **Lowes in Maddington**.

Maddington Shopping Center
Crn Attfield St/ Burslem Drv
Maddington, 6109
Phone: 9452 0380

Western Australian law requires all school-aged children go to and attend school every day. If your child is absent, please notify the school via: telephone, the website absence button, email, in person or via the Compass app.

If your child is late to school for any reason, please bring them to the office to collect an arrival note before they go to class.

CONTACT US

Yale Primary School
Sage Road
Thornlie WA 6108

Office hours
8.00am - 4.00pm

Phone
(08) 9232 3500

Website
www.yale.wa.edu.au

Email
yale.ps.reception@education.wa.edu.au

