

# Newsletter



**Term 1 Issue 1 February 2023**

## Upcoming Events

### Term 1 Assemblies

Wk 2- 10 February  
**Music** (Mr Riley)

Wk 4- 24 February- **C6**

Wk 6- 10 March- **C3**

Wk 8- 24 March  
**NAPLAN**

Wk 10- 6 April  
**ANZAC Assembly**

**Monday 6 March**  
Labour Day

**15-24 March**  
NAPLAN

**Thursday 6 April**  
Last day of Term 1 for students

**Friday 7 April**  
Good Friday

**Wednesday 26 April**  
First Day Term 2 for students

## MESSAGE FROM PRINCIPAL GLEN READ

Dear Parents and Carers,

I would like to welcome you all back to school for 2023. I hope you had a happy and restful holiday and a chance to catch up with family and friends over the festive season.

I would like to welcome the following staff to Yale Primary School for 2023:

Mr David Melling, Associate Principal who will be working in the office on a Thursday and Friday and is returning from leave.

Ms Larissa Wake, LOTE teacher, and the LOTE subject this year is Indonesian.

Ms Clarissa Widjanarko, School Psychologist.

Mr Liam Carle who worked at Yale Primary School last year for a term and is now in classroom B4 for 2023.

Ms Emily Farrell who will be teaching in classroom A4.

Mrs Dawn McCaig who is teaching in Kindy this year.

Term 1 has started very smoothly thanks to the very good organisation and efficiency of our staff. We look forward to another fantastic year with our students, staff and parents. The students have settled into the return of school quickly which is great.

Kind regards

**Glen Read**



## MESSAGE FROM ASSOCIATE PRINCIPAL CAROLINE CHURCHILL

Hello and welcome back

Our teachers and education assistants returned to school on Monday 30 January and after a yummy shared breakfast of Mc Yale burgers we were off to a great start of planning and preparation for 2023. At Yale, student learning programmes align with The Western Australian curriculum, which is the mandated Pre-primary to Year 10 curriculum for Western Australia Curriculum. In December 2022, endorsed revisions to the Western Australian Curriculum for English and Health and Physical Education were approved. We have been implementing the phonic and word knowledge component of the English Education for several years, and students are achieving improved learning outcomes. On Tuesday, we completed a workshop on Respectful Relationships which is in line with the Health Education modified changes. As always, Yale is at the forefront of current educational pedagogy.

What an amazing start to the year. On the second day of the students returning I had students showcasing their learning. Ms Donaldson was impressed with their work and positive attitude so these A5 boys became our first office superstar for 2023



Attendance continues to be a major focus for 2023. Students being here everyday and on time, gives them the best chance to settle into class routines and progress in their learning.

*Thank you to all those families who contact the school, teacher, or use one of our on-line platforms to let us know when their child is away. It is truly appreciated.*

I look forward to working with you all in the 2023 school year.



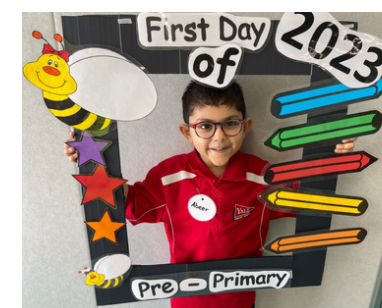
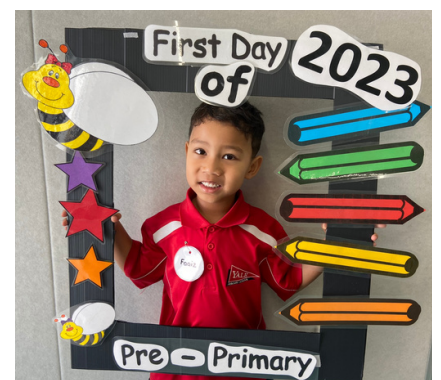
Kind regards,

*Caroline Churchill*



# First day of school 2023

KINDY  
& PP



First DAY  
OF  
School



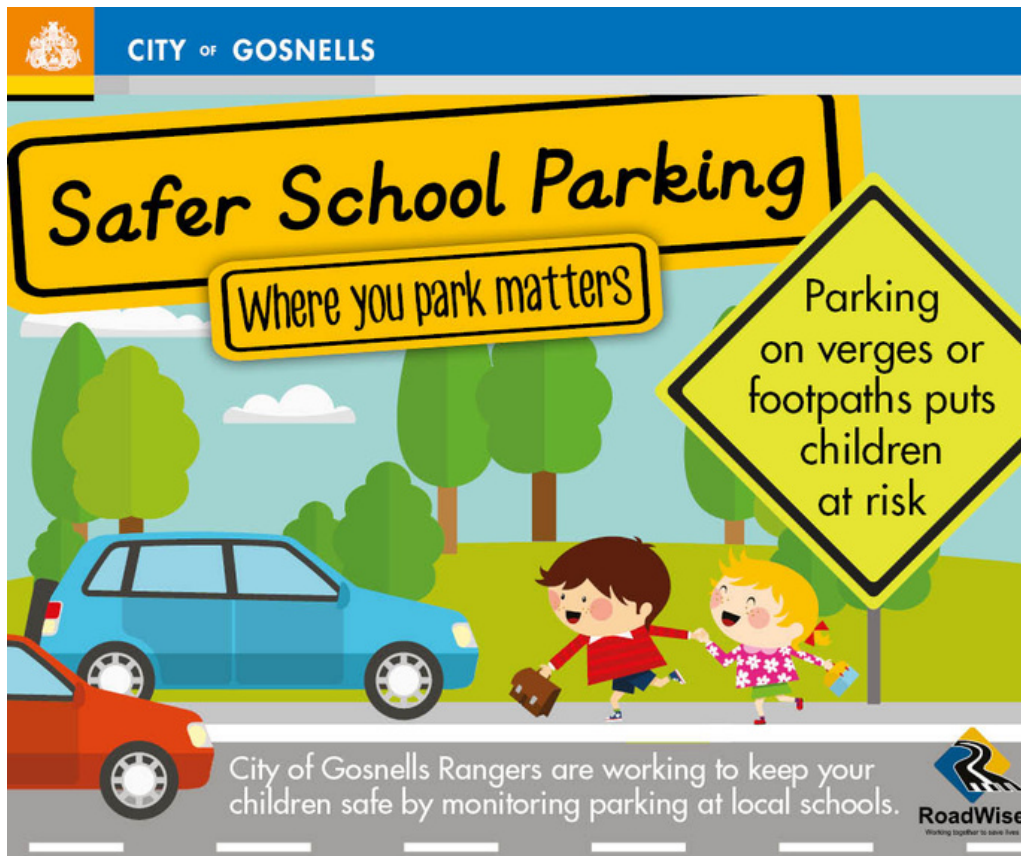


## Scholastic Book Club

Scholastic Book club brochures have been sent home with the students. Order can only be placed online (LOOP method outlined in the brochure) and will close Wednesday 15th February 2023 at 9am.



## City of Gosnells news



## Did you know?

It is an offence to park on a footpath. Blocking pathways gives pedestrians little choice but to walk on or near the road, increasing the risk of an accident. If you are parking near a school please consider the safety of children. Parking on private property or a verge opposite the private property is unlawful unless the property owner has given permission. Don't risk getting a fine and be considerate of residents who live around schools.

## Staff Car Park

A reminder to all parents and students to not walk through the staff carpark at any time. This is to ensure the safety of everyone. Please use pedestrian gates and pathways at all times.

Thank you



## Late notes

### Coming soon:

Students who arrive late to school must collect a late note from the office before going to their classroom. In the coming weeks our late notes will now be printed individually for each student. This will include a date and time stamp so their teacher can clearly record the time their student entered the school. We ask you to be patient with any initial hiccups you may experience, as we continue to improve our service to you.