

Newsletter



June 2022 Term 2 Issue 4

Upcoming Events

Friday 17 June

B4 School Assembly

Friday 24 June

Winter School Carnival
Year 4-6

Year 6

Thornlie Senior High
School Applications
closing date

Tuesday 28 &

Thursday 30 June

School photos

Friday 1 July

Final day of Term 2

Monday 18 July

Staff Development Day

Term 3

Tuesday 19 July

First day back at Yale for
students



MESSAGE FROM PRINCIPAL GLEN READ

Dear Parents and Carers

On Monday the 13th June, at 3.15 pm, in the shed, the P&C will be holding their Annual General Meeting and we would love to see as many parents attend who might want to contribute to the P&C in the future. The P&C or Parents and Citizens association play a vital role in supporting the school to raise funds to enhance the students learning in the classrooms. The P&C members are volunteers who unselfishly give up their time to support the school and in providing a much needed boost to the schools overall feel and culture. So if you are available please come along and support them.

At the back of the school near Kidman Court the New Early Childhood playground is progressing steadily and I know that the teachers and education assistants are looking forward to seeing the students playing in the area. The project is being managed by the Departments contractors called Programmed. I am hoping that it will be completed before the end of June. That assessment might be a bit optimistic but, fingers crossed, it will be good when it is done.

I am still waiting to hear from the Department of Finance when the new building might start to replace the one we lost in the fire. At this stage all I know is that the insurance claim is with the Insurance Loss Adjustor. The department has advised me that the rebuilding can't begin until we have finance approval from Insurance Commission of WA.

Kind regards

Glen Read

Principal



MESSAGE FROM ASSOCIATE PRINCIPAL CAROLINE CHURCHILL

Selamat siang

Hello

Welcome to our week 7 newsletter

Assembly

Kemenangan to B1 for their fabulous assembly item on

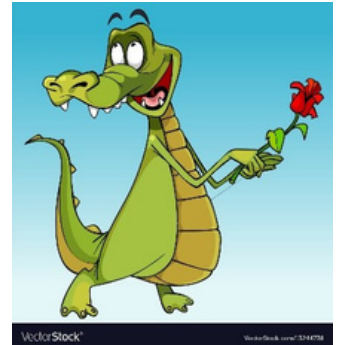
'The Crocodiles'. The T4W presentation was a great example of the amazing learning and teaching at Yale. A wonderful extension to that was the students use of Auslan

·Auslan is the sign language of the Australian deaf community.

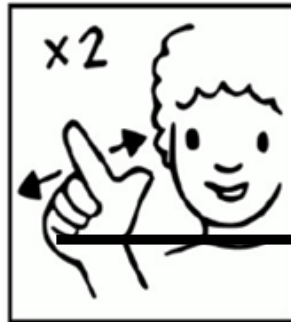
·It is a unique language to Australia.

·Auslan has its own grammar and vocabulary; it does not follow English sentence structure.

<https://www.betterhealth.vic.gov.au/health/conditionsandtreatments/sign-language-auslan>



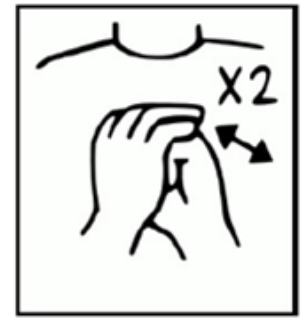
PRINCIPAL



TEACHER

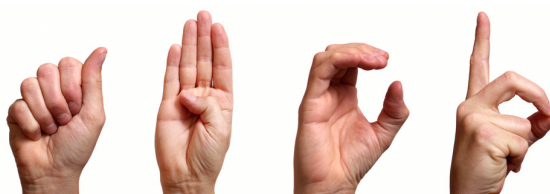


STUDENT



FRIEND

Thank you to the B1 teachers and students. We really enjoyed your item

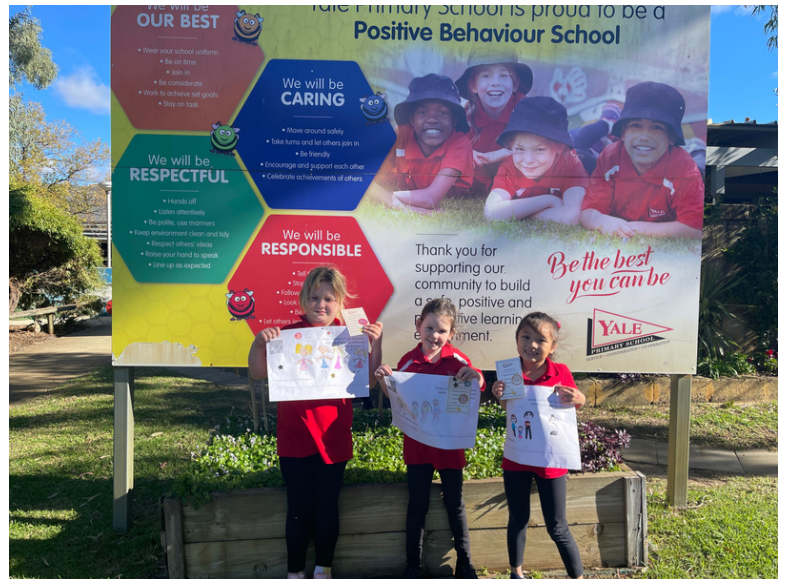
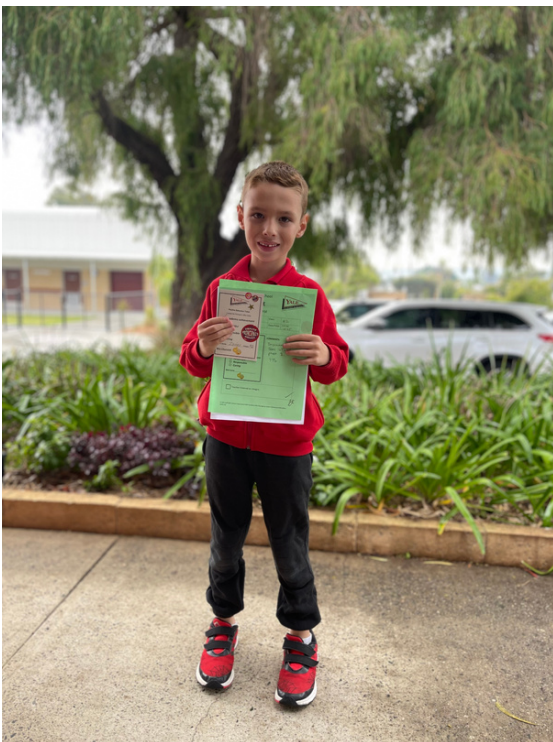


MESSAGE FROM ASSOCIATE PRINCIPAL CAROLINE CHURCHILL



Office Superstars

We love students succeeding at Yale and these fabulous learners came to the office to share their success. Big smiles and lots of stickers always make for a great day. Keep up the great work everyone.



PBS Reward Day

Thank you to Mr Parfitt and the Yale PBS team for the fabulous sausage sizzle last Friday. This recognition and reward is to say thank you to those students who follow our school values and help make Yale a great place to grow and learn together



On Wednesday C5 celebrated their fabulous attendance percentage of 88.8% by having a pizza party and movie. I wonder who our next attendance winners will be?

If you are well, we want you at school, every day and on-time

Thank you to all our families who contact the school when their child is absent. We appreciate your support.



Spelling Bee



Spelling Bee

There's a buzz in the air for our annual spelling competition this year. Students will be vying for the prestigious spelling bee trophy (1st place) and medallion (2nd place and 3rd place) in each year level. Good luck and happy spelling to all our students for displaying our bee value of being the best we can be

Spelling words have been sent home and are also available on Connect

Spelling Bee finale will be in week 9 of this term

NEWS AROUND THE SCHOOL

Sausage Sizzle

On Friday 3 June, Yale Primary had a whole school sausage sizzle as part of the PBS programme. Mrs Walker and Mr Read cooked over 450 sausages as a great way of saying thanks for all the hard work Yale students put into showing us the core bee values of respect, responsibility, caring and being our best" Keep an eye out for the next whole school reward coming up at the end of this term.

The years 1-4 have begun the new PBS points system with great results. So far 118 students have received their Bronze certificate and are well on their way to silver! Each week, students can earn up to 5 points, and need 50 points for bronze, 110 points for silver and 170 points for gold.

Also congratulations to the senior students who gained their medallion.



ASSEMBLIES ARE BACK!

Week 4 saw the beginning of assemblies for 2022. The Yale community took the opportunity to acknowledge the support given by our 3 neighbouring schools; South Thornlie PS, Thornlie PS and Thornlie Senior HS, during our 3 week relocation period in late Term 1. We also acknowledged and celebrated the P & C for P & C Appreciation Day. Many PBS awards were awarded to students who have upheld the core bee values at Week 6 assembly.



NEWS AROUND THE SCHOOL



One of our EAs, Toni Petts, wanted to share some heart-warming news about one of our favourite special needs students who graduated in 2021, Gianni Canzurlo.

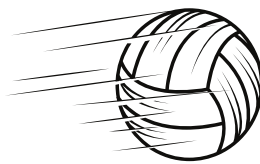
She contacted his mum recently to see how Gianni and Dom are going at their respective high schools. She was thrilled to discover that Gianni has been voted in as Head Student Councillor at Cannington Community College, Education Support Centre.

Those of you who know him will know that he will be in his element in this role and do an awesome job !!



Meteor Tournament

Earlier in the year the Year 5/6s competed in the Meteor Tournament and this was the winning team- **"Big Grapes"**!



EC1 News

The last 2 weeks for T4W we have been doing the 3 little pigs in PP

For pre- primary children it allows children to build confidence through oral re-telling. We even created straw, sticks and brick house plans, we then did our story map with T4W actions.



SCHOOL PHOTOS



Your School Photos will be taken on:

Tuesday 28 June 2022

Thursday 30 June 2022

Class Photos/Portraits:

- Every Student will have their photo taken, whether they are purchasing photos or not.
- The school has chosen to use the online ordering system. Your child will be given an online ordering instruction slip and a unique student shootkey.
- Log onto www.msp.com.au and follow the prompts to place your order.
- If you lose your shootkey the school reception will have a copy to quote back to you.
- The expiry date for online ordering is the Wednesday 6 July 2022 Any orders received after this date will incur a \$30.00 archive fee.
- Spare envelopes (green) are available at school reception should you wish to pay via cash.

Family Photos:

- Envelopes can be obtained from Administration.
- Family photos are taken each morning before school.
- Please ensure that your family envelope and payment are handed to the Photographers on photo day.
- If you do not have the correct money, we will provide any change needed when photos are delivered to school.
- Family photos cannot be ordered online.
- Once school has received photos, family photos will remain at reception for parents to collect.

Please Note:

Individuals and Family Images are not available to view online for Students' Security

If for any reason you need to contact MSP regarding your child's photos you will be asked to provide your child's shootkey.

WONDER



RECYCLING

Welcome to Wonder Recycling Rewards for Schools.

Wonder recycling rewards is a fun and easy program we've created to collect and recycle bread bags at school. Once collected, Wonder is going to turn the plastic into wonderful things like play equipment.

And as Yale Primary is a registered school, our recycling efforts will earn us rewards points to redeem new sports equipment from RHSports. The collection boxes will be placed around the school and / or families can give the bags to the teachers to be placed into the collection boxes.

So come on Yale families, let us help the planet and our school by recycling the Wonder bread bags.



We thank you all for your efforts.



P&C NEWS

On Monday 13th June 2022 at 4pm in the Shed, we will be holding our P&C AGM. This meeting was delayed due to COVID restrictions. All current office bearer roles will be declared vacant and nominations called for the following positions:

President
Vice President
Secretary
Treasurer

If you wish to nominate someone or yourself for any of the above positions please email
yalepandc@hotmail.com

We need as many people as possible to attend this meeting (minimum of 12 people) as without an active P&C the school will not have an operational canteen (the canteen will have to close). The current committee has become more committed with their personal jobs, so we need some new people to take on roles within the committee and assist in organising events. Perhaps you would like to take on a shadow role of a committee member this year to learn the ropes or organise to job share with another parent? Please consider this and do not just leave it up to someone else, many hands make light work!

All are welcome, you can be a parent, grandparent, aunty, uncle, friend, citizen etc. however only financial members are eligible to vote and/or nominate for vacant positions. A Gold Coin donation is the current Membership fee per year, which can be paid on the day. Please jump onto our Facebook page and find the AGM post to register your attendance.

The P&C thanks you for your support!



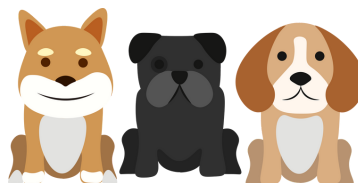
HELPING HANDS WINTER HOLIDAY PROGRAM

Come and join in the fun at our Helping Hands winter holiday program.

New families can register by calling: **0452 275 110**

Don't miss out, book now.

The team at Helping Hands



REMINDER ABOUT DOGS IN AND AROUND SCHOOL

The City of Gosnells promotes responsible dog ownership. Being a responsible dog owner is about understanding your pet's needs and your responsibilities to the community. The responsibility for a dog's actions rests with its owners. Dog owners are required to ensure that their dog is on a leash at all times when in a public place other than when in a gazetted off leash exercise area. Dog owners must ensure that their dog remains under effective control at all times. If your dog is in a public place without a leash you may face a fine of \$200.