

Newsletter



May 2022 Term 2 Issue 2

Upcoming Events

Week 4

NAPLAN testing
for students in
Yr 3 & Yr 5

Friday 20th May

Assembly A1, A2 & A3

-P&C Appreciation Day

-Thank you morning tea
recognizing
contributions made by
schools during our
relocation

24 June 2022

Year 6

Thornlie Senior High
School Applications
closing date

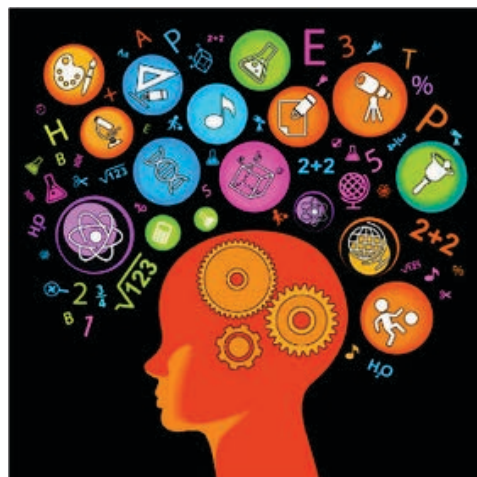


MESSAGE FROM ASSOCIATE PRINCIPAL CAROLINE CHURCHILL

Sat sri akaal (ਸਤ ਸ੍ਰੀ ਅਕਾਲ), Hello
Welcome to our second newsletter for this term

Assembly

It is so exciting to have our first school assembly for the year on Friday 20 May. The assembly will be presented by A1, A2 and A3. We will be holding the assembly in the "new" undercover area. We look forward to seeing you all then.



Office superstars

It has been great to visit classrooms and see our students engaged in their learning. I had the opportunity to see in action some of our year 6 students working with our pre-primary students with Bee Bots and Blue Bots, during STEAM learning on Wednesday afternoon. STEAM Education is an approach to learning that uses Science, Technology, Engineering, the Arts and Mathematics as access points for guiding student inquiry, dialogue, and critical thinking. <https://artsintegration.com>

This is a great initiative at Yale, thanks to our STEAM co-ordinator Ms Hardman and teachers Ms Martin and Ms Beardmore.

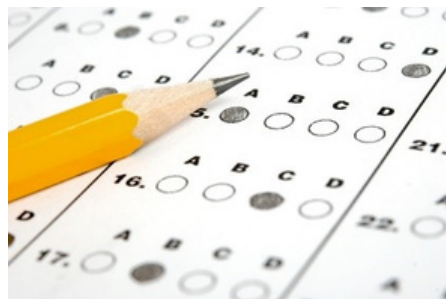
Five superstars who came to the office this week were super proud of their achievements and so were we.



MESSAGE FROM ASSOCIATE PRINCIPAL CAROLINE CHURCHILL

NAPLAN

Our students in year 3 and year 5 are currently completing the national assessment program. An important reminder about NAPLAN:



NAPLAN is just one test. A variety of factors can affect how well your child does on any test, including their motivation, attention, mood, physical well-being, and opportunities for learning.

<https://www.melbournechildpsychology.com.au/>



As with all learning and assessments at Yale, we ask our students to try their best and put forward their best effort

Rapid Antigen Tests

The Department has been working with the Department of Finance to organise the delivery of over 10 million RATs to all schools in Western Australia for distribution to students and families. The delivery for Yale has been scheduled. We anticipate that we will be able to begin the process of distribution early next week. We will notify you of collection dates.

RAT allocation is 20 tests per student. The tests cannot be distributed to students. They must be collected by a parent/carer and they must be signed out. Details will follow next week.

YALE PRIMARY SCHOOL P&C

Thank you to all our wonderful volunteers who assisted at the Mother's Day stall over the three days, and of course thank you to all who bought gifts for the special people in their lives. We raised \$1302.75 profit! All funds raised by the P&C go back into the school through various projects.

On Monday 23rd May 2022 at 4pm, we will be holding our P&C AGM due to the delay from COVID restrictions. All current office bearer roles will be declared vacant and nominations called for the following positions:

President
Vice President
Secretary
Treasurer

If you wish to nominate someone or yourself for any of the above positions please email yalepandc@hotmail.com

We need as many people as possible to attend this meeting (minimum of 12 people) as without an active P&C the school will not have an operational canteen. The current committee has become more committed with their personal jobs, so we need some new people to take on roles within the committee and assist in organising events. Perhaps you would like to take on a shadow role of a committee member this year to learn the ropes or organise to job share with another parent?

Please consider this and do not just leave it up to someone else, many hands make light work!

All are welcome, you can be a parent, grandparent, aunty, uncle, friend, citizen etc. however only financial members are eligible to vote and/or nominate for vacant positions. A Gold Coin donation is the current Membership fee per year, which can be paid on the day. Please jump onto our Facebook page and find the AGM post to register your attendance.

The P&C thanks you for your support!



PREMIER'S READING CHALLENGE

We invite students from Kindergarten to Year 10 to uncover great mysteries through the world of books and to sign up for the Premier's Reading Challenge. The challenge is to log 12 or more book titles from May to 9 September 2022, and readers will go in the draw to win extraordinary prizes. No matter where you are from, you can experience the joy of reading and explore thousands of amazing stories/

<https://www.premiersreadingchallenge.wa.edu.au/>

We are excited for you to join this year's challenge. The challenge will run from May to 9 September 2022. You can take part if you are in Kindergarten up to Year 10, whether you go to school or are educated at home. By taking part in the challenge and recording the books you've read, you will be in the running to win some fantastic prizes, including family holidays and experiences across Western Australia. No matter where you are from, you can uncover great mysteries and explore thousands of amazing stories through the enchanting world of books. So come on Yale Primary students and families and let's get our reading hats on and sign up for this wonderful project and record our fun adventures with books.

About the challenge

The Premier's Reading Challenge is a literacy engagement program established in 2022 to:

- encourage students to read more books and enjoy reading
- improve literacy levels.

Benefits of the challenge

The challenge will:

- raise the profile of reading and literacy in schools
- give students a focus for their reading
- encourage students to enjoy reading and read more books
- encourage students to participate by being challenged
- offer incentives and prizes for readers
- build self-esteem, pride, school unity and a sense of achievement among students
- increase the involvement of parents in their child's reading
- increase the number of library books borrowed
- contribute to increased literacy levels.



To register:

CLICK ON THE READING CHALLENGE LINK IN YOUR PARENT CONNECT NOTIFICATION, WHICH WILL TAKE YOU TO THE REGISTRATION PAGE.

IMPORTANT NEWS



Families wanting to take their children on vacation during the school term, please email the school to send your request to the Principal, MrGlen Read.

KINDY AND PRE-PRIMARY NEWS

EC3

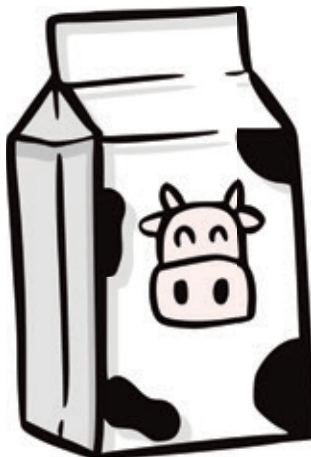
In week 2 of the term, some of the Kindy Blue Group students were very excited and happy to be able to play with their peers.



For some of the students, it was their first day back to school after the break.



Kindy Blue Group also had great fun at the Brownes Incursion in week 2.



KINDY AND PRE-PRIMARY NEWS

EC1

Last week we learnt about living and non-living things. All living things breathe, eat, grow, move, reproduce (make babies) and have senses. Non-living things do not eat, grow, breathe, move and reproduce. They do not have senses. We decided to do an experiment with growing plants. We had 3 groups of seeds that were only exposed to the sun, seeds that were only exposed to water and another group who were exposed to both sun and water. We made a prediction in our science books as to what we think might happen to all 3 groups. We are going to check them everyday for a week and draw pictures of what we see.



EC1 learnt all about how milk is made, where it comes from and the benefits of eating dairy.

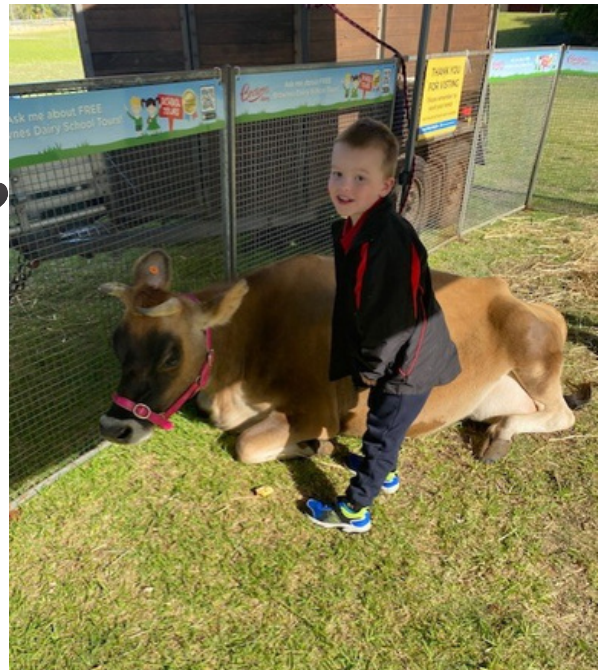
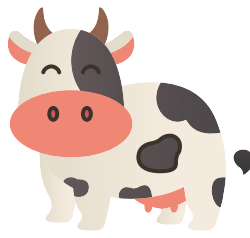
We also tasted some different yoghurts and got nice and close to Farmers Damien cow.



Brownes
dairy



EC1 BROWNES DIARY INCURSION



EC2 MOTHER'S DAY CELEBRATION



Mother's Day celebration

Thank you so much to the families that came to celebrate Mother's day with EC2. We loved making pictures, bracelets and scones for all the mums!





EC2



A3

A3 are learning all about procedures! We followed a recipe and made delicious fairy bread.

